

# PORTOCARGO®

Think Local, Act Global.



# Where are We?

**Portugal** is located in western Europe and its geographic position is very relevant. Being in the South corner of Europe, it enjoys a privileged position to trade with Europe, Africa, South America, Asia, North America and many other destinations and origins.

Aside to traditional products (textiles, home textiles, ceramics, footwear, cork products, wine, olive oil, auto parts, molds) Portugal is developing Tech / IT Sector and several Global Companies are selecting Portugal for their R&D departments.



# Facts & Figures about Portugal

**Capital**  
Lisbon

**Official  
Language**  
Portuguese

**Population**  
10.266.882

**Currency**  
Euro

**GDP (2022)**  
20 217,30€  
*Per Capita*

**Main Land  
Sea Ports**  
Sines  
Leixões  
Lisbon

**Main Land  
Airports**  
Lisbon  
Oporto  
Faro

**Island  
Airports**  
Madeira  
Azores Islands



# Sea Ports and Airports In Portugal

Azores Islands

Madeira



## Main Land Sea Ports

Leixões  
Lisbon  
Sines

## Main Land Airports

Faro  
Lisbon  
Oporto

## Island Airports and Seaports

Madeira  
Azores Islands

# Portugal Exports

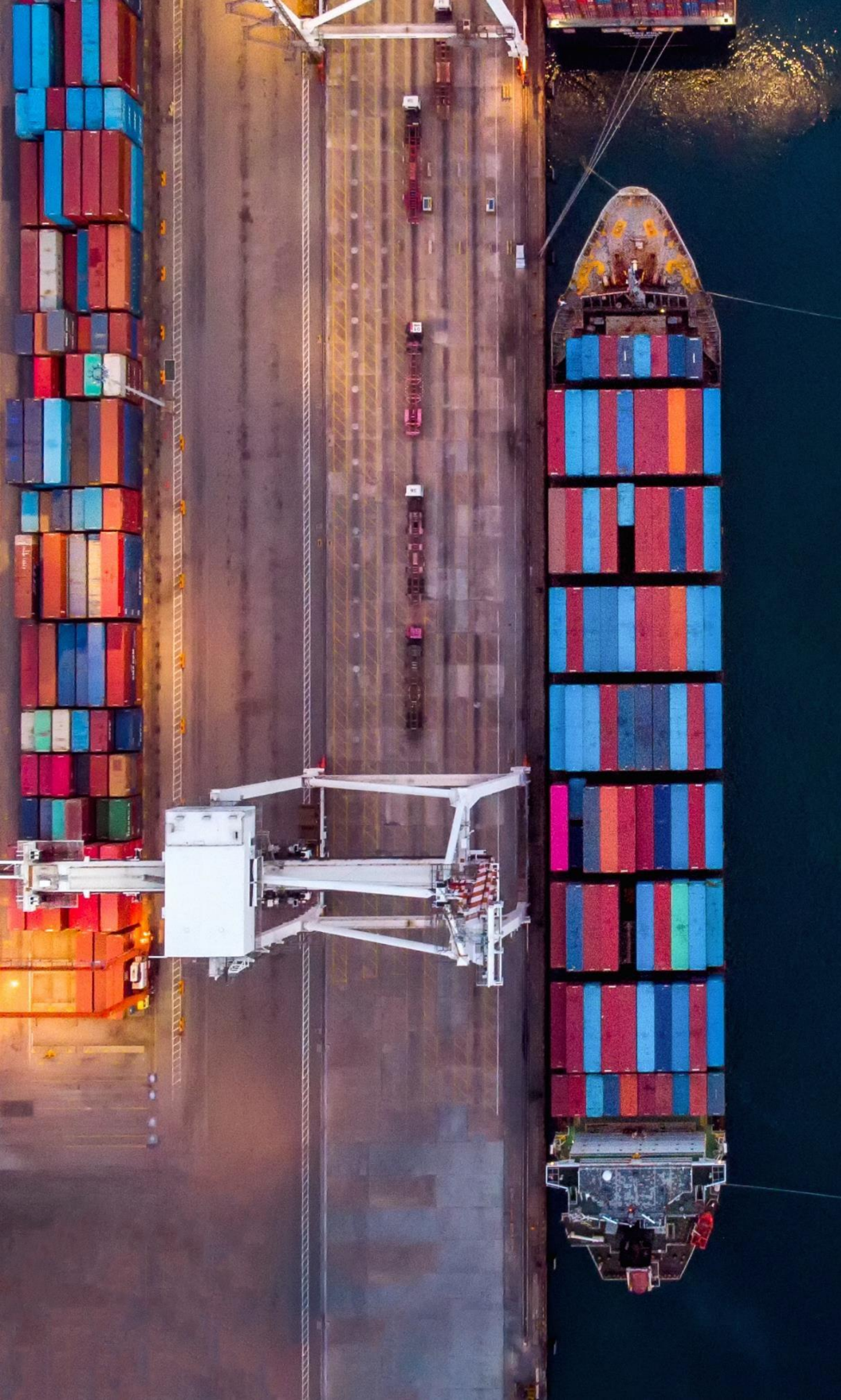
## Top Exports Commodities

- Machinery and parts
- Automotive and parts
- Chemicals
- Food, Perishables & Related products
- Ores and Metals Miscellaneous Finished Products
- Textiles and Apparels
- Wood, cork and paper
- Footwear
- Aircraft, vessels and parts

## Top Exports Countries

- |                 |                  |
|-----------------|------------------|
| ◦ Spain         | ◦ China (P.R.C.) |
| ◦ France        | ◦ Switzerland    |
| ◦ Germany       | ◦ Turkey         |
| ◦ U.K.          | ◦ Canada         |
| ◦ United States | ◦ Mauritius      |
| ◦ Italy         | ◦ Mozambique     |
| ◦ Netherlands   | ◦ Sweden         |
| ◦ Belgium       | ◦ South Africa   |
| ◦ Angola        | ◦ Mexico         |
| ◦ Brazil        | ◦ India          |
| ◦ Morocco       | ◦ Morocco        |





# Portugal Imports

## Top Import Commodities

- Machinery and parts
- Chemicals
- Food, Perishables & Related products
- Olive Oil
- Automotive and parts
- Ores and Metals
- Textiles and Apparels
- Miscellaneous Finished Products
- Wood, cork and paper
- Footwear
- Aircraft, vessels and parts

## Top Import Countries

- Spain
- Germany
- France
- Italy
- Netherlands
- U.K.
- China (P.R.C.)
- United States
- Vietnam
- Brazil
- Angola
- Turkey
- Azerbaijan
- India
- South Korea
- Bangladesh
- Indonesia
- Japan
- Thailand
- Pakistan
- Nigeria



**PORTOCARGO** ®

Think Local, Act Global.

---

# About us

Portocargo is established since 1990 and is one of the most recognized forwarders operating in Portugal.



Portocargo is a company dedicated to plan, coordinate and execute global logistic solutions. The company integrates the BBL Groupe (since March 2021), that has over 200 offices and warehouses worldwide, and employs around 2100 people.

In cooperation and coordination with Agents with recognized technical capacity and professional sustainability, based in most countries of the World, Portocargo offers a complete and integrated service that allows planning and executing not only the transportation but also all the connected services.

It is Portocargo main objective to find and present solutions according to the needs of each Customer, specificity of each cargo, time and cost requirements.

Portocargo is a company that through its material and human resources always finds a specialized solution for all kinds of goods to be deliver in almost all the Globe!

## 34 Years

Serving our Clients Worldwide





## Our Vision

Be recognized as a market reference in our industry based on our commitments with Customers, Business Partners and Staff



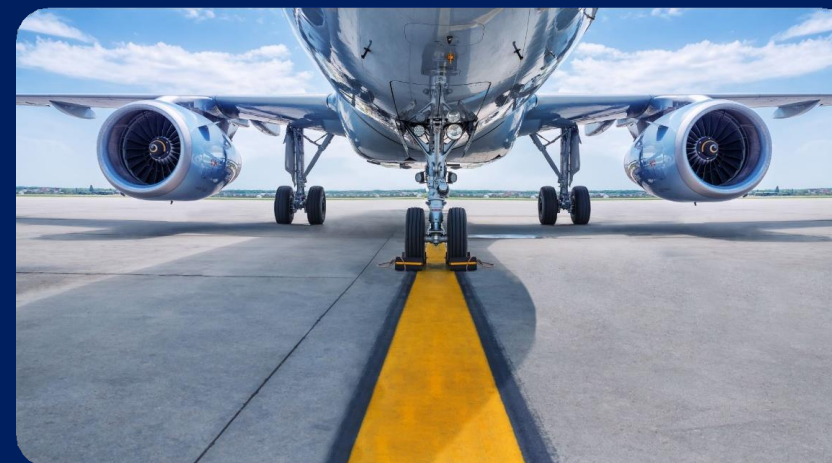
## Our Mission

Create value to our customers, by delivering tailored solutions to move their products, promoting efficiency and effectiveness in all processes based on innovative systems, clean processes with the best people.



## Our Purpose

Every day, it is through collaboration with Portocargo that hundreds of organisations fulfill their purpose and develop their operations



## Our Values

Teamwork, Reliability, Trustworthy, Integrity, Transparency, Ongoing Training and Constant Care.



# Our Team

We Rely on a Team of  
**Highly Experience and  
Qualified Professionals**

Portocargo's Technical Staff is widely recognized for its expertise, professionalism and experience. We continuously invest on trainings and the qualification of our Team, ensuring that our Professionals have all the required tools to provide high levels of quality to meet the individual needs and requirements of each Customer.



# Our Team

# Partnerships & Network

Portocargo's works closely with agents with a high technical capacity and a deep local knowledge, that are carefully selected and reviewed. **Portocargo** is represented in almost of all countries all over the World, from the most remote origin to the most distant destination.

Through this network, Portocargo plans, coordinates and provides the transportation of goods, from the most remote origin to the most distant destination, whatever the way or ways to use or the formalities to carry out.



**Providing the Best  
Global Logistics  
Solutions Since 1990**

**PORTOCARGO**  <sup>®</sup>  
Think Local, Act Global.

Our Services

# Presenting Global Solutions for Your Needs

Air Freight

Sea Freight  
RO-RO

Logistics &  
Distribution

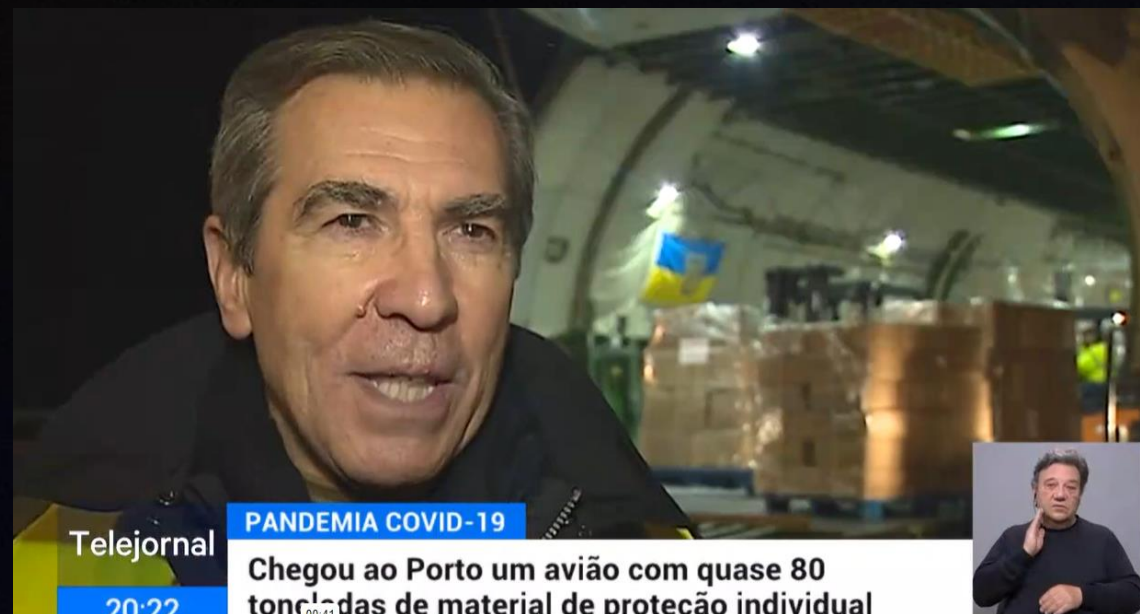
Customs  
Formalities

Warehouse

Foodstuffs  
and  
Pharma

Insurance

Multimodal  
Project Cargo



## Our Services

# Air Freight

Working with the most reliable and recognized Airlines, **Portocargo** manages and guarantees the cargo delivery from any point in the world, offering a flexible and appropriate service to the expected destination at the scheduled time. Portocargo aims to find the best transit time without neglecting the quality, price and safety ratio.

**Portocargo** is an IATA Agent and Recognized Agent by ANAC.



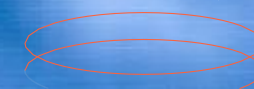


## Our Services

# Sea Freight

We operate to and from any point in the world, offering a flexible and appropriate service to the needs of each shipper, consignee and particularity of each cargo, aiming to find the best transit time without neglecting the quality, price and safety ratio.

- 1 FCL – Full Container
- 2 LCL - Groupage
- 3 Documentation
- 4 Storage
- 5 Consolidation
- 6 Control of Overseas Orders; Procurement
- 7 Special Cargo
- 8 Contractual logistics



Our Services

# RO-RO Multimodal & Project Cargo

**Portocargo** manages Ro-Ro shipments between any markets, including to/from Europe. The company coordinates the transport from origin to the destination port and manages the Inspection Process, having agreements with the main Ocean Carriers.

Portocargo takes logistics to the next level by offering multimodal services that transcend borders and modes of transport. On the other hand, the company also offers the transport of large, heavy, high-quality or critical equipment, also known as Project Cargo or heavy lift.







## Our Services

# Logistics & Distribution

**Portocargo** has the ability to integrate the various functions inherent to the supply chain, namely transportation, warehousing, labeling, palletizing, "Pick and Pack", and distribution.

- 1 Cargo Management
- 2 Transport
- 3 Storage
- 4 Distribution
- 5 Labelling
- 6 Palletisation
- 7 "Pick & Pack"

## Our Services

# Warehouse

Bonded Warehouse in Oporto (Leixões) and Lisbon to handle all kind of cargos.



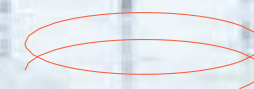
**Oporto WHS**  
16 500 Sq M



**Lisbon WHS**  
7950 Sq M

- 1 24/7 Security Guards
- 2 CCTV Surveillance
- 3 Fire Sprinkler System

- 5 Security Alarm
- 6 C-TPAT Compliant



## Our Services

# Foodstuffs & Pharma

**Commodities:** General foodstuff, wine, milk, preserves, canned food, honey, cheese, vegetables, etc.

Regular shipments from Portugal to worldwide

### By Air.

### By Sea:

- Warehouse (Lisbon and Oporto)
- LCL and FCL
- Pickup and Packing
- Documentation (Customs)
- Consolidation and Storage



## Our Services

# Foodstuffs & Pharma

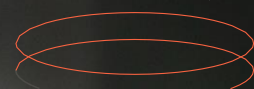
**Reefer:** Frozen and Chilled (Controlled Temperature)

**By Sea:**

- Capacity to manage frozen and chilled cargoes
- Warehouses (Lisbon and Oporto); Chilled and Frozen
- Local Trucking with Genset (granting temp.)
- Regular Sailings
- FCL/LCL
- Dataloggers

**By Air:**

- Regular Shipments with controlled Temp. (Frozen and Refrigerated cargo)



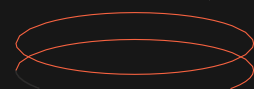


## Our Services

# Customs Formalities

Credible Customized Technicians, established in the various points where **Portocargo** is headquartered, ensure the smooth and efficient execution of all legal services.

- 1 Custom Clearance
- 2 Fiscal Representation
- 3 Intrastat
- 4 Customs assessment



A photograph showing a business meeting. In the foreground, a person's hands are visible, one holding a silver pen and pointing at a document on a wooden table. Another person's hand is also visible, pointing at the same document. The background is slightly blurred, showing other people in business attire. The overall scene is professional and focused on reviewing documents.

## Our Services

# Insurance

The right insurance is crucial to prevent and secure your goods.

Based on reliable and experienced insurance companies, **Portocargo** offers a tailored Insurance Policy that protects your goods throughout the whole supply chain.



# Our Responsibility

## ESG Principles



At Portocargo, the ESG principles are an indispensable part of our global strategy. We assume our Responsibility towards our Employees, Clients, Partners, the Environment and Society.

Our commitment to a healthy lifestyle is reflected in our ongoing support for our employees' well-being, namely through sport, healthy eating and work-life balance. In this matter, Portocargo also support young people in sports activities. Education is crucial for the change we want to see in the World, so we are proud to fund Stand4Good, an ONG that promotes equal access to education.

At our facilities, we have adopted a set of actions to reduce paper (through a digitalization and innovation process), plastic and energy consumption, aiming at continuously reduce our ecological footprint.


We continuously train and promote the qualifications of both our employees and trainees, aiming at providing them with the required skills for their career progression.

Contact  
Us

# Where to Find Us




## HQ Oporto (Leixões)

 Rua Joaquim Dias Salgueiro, 167  
4470-777 V. N. da Telha  
Maia – Portugal

 [sousa.sara@portocargo.pt](mailto:sousa.sara@portocargo.pt)  
[figueiras.rogerio@portocargo.pt](mailto:figueiras.rogerio@portocargo.pt)  
[afonso.nuno@portocargo.pt](mailto:afonso.nuno@portocargo.pt)



## Lisbon Branch

 Av. Infante D. Henrique, 333-H,  
Edifício 4, Escritório 14  
1800-282 Lisboa – Portugal

 [pontes.odeta@portocargo.pt](mailto:pontes.odeta@portocargo.pt)  
[pires.ana@portocargo.pt](mailto:pires.ana@portocargo.pt)





# Certificates



WELCOME TO THE WORLD OF  
**PORTOCARGO**

**PORTOCARGO**<sup>®</sup>  
Think Local, Act Global.



---

**Thank You!**